

*The Campaign to*  
**Restore Social Virtue & Purity**  
*to America*

*February 1997*



**RSVP answers the question. . .**

**How has America gone  
from Chastity and Morality  
to Kinsey and Condoms,  
in One Generation?**



# From Moral Absolutes & American Common Law to Sexual Anarchy?



The scientific authority for the shift  
away from Bible-based morality as  
the standard of judgment regarding  
human sexuality in the 2nd Half of  
the 20th century is Dr. Alfred  
Kinsey's sex "scientism."



From 1948 through today, the prevailing human sexuality model taught and used in all of America's institutions is rooted in fraudulent data and sexual crimes against infants & children conducted by pedophiles and directed by scientists.



**ONLY 2 SEXUALITY MODELS CODIFIED AS STANDARDS IN AMERICAN HISTORY**

**Creational**

or "Generative" Standard

*"Common Law" Pre 1948  
(Sanctioned by Moral Authority)*

**"One Nation Under God"**

Marriage:

- Mother, Father, Children
- Sanctity of Marriage
- Fidelity / Purity / Monogamy
- Childhood Modesty
- Pre-marital Chastity
- Sexual Violations Punished

**Recreational**

or "Degenerative" Standard

*"Model Penal Code" Post 1948  
(Sanctioned by Kinsey Authority)*

**One Nation Under Gov't**

Polygamy & Various Human Groupings:

- Varied Genders and Sexual Orientations
- Open Marriage / No Fault Divorce
- Adultery & Free Love
- Adult/Child Sex Positive
- Early Sexual Activity Taught
- Sexual Laws Relaxed



Kinsey prophesied and promised those who  
adopted his sexuality model better sexual health  
and gave us the sexual revolution  
and evolutionary sex education.

At the 50th anniversary of his seminal research,  
it is time to ask America, **“Are you better off in  
1998 than you were in 1948?”**



## What is *RSVP America*?

A Campaign to Restore Social Virtue and  
Purity to America...

Mother by Mother,  
State by State,  
Nation by Nation.



***RSVP America is a national campaign  
not another organization***

The *RSVP* campaign is a **restoration movement**.  
The campaign mission is to discredit, debunk and  
then **defund** publicly funded programs relying on  
or based upon Alfred Kinsey's fraudulent social  
science data.



**The Campaign Title is a Prayer for the Outcome**

**Restore**

**Isaiah 42 13-22**

*But this is a people robbed and spoiled ; they are all of them  
snared in holes, and they are hid in prison houses : they are for  
a prey, and none delivereth ; for a spoil, and none saith Restore.*

**Social**

**Noah Webster**

*Pertaining to society, or to the public as an aggregate body; the  
inhabitants of a state or of a city constitute a society, having  
common interests and hence it is called a community.*



## The Campaign Title is a Prayer for the Outcome

- Virtue**            Noah Webster  
*Virtue is a secular, not a religious word. "Virtue," whether driven by religious or civic duty, "is nothing but voluntary obedience to truth."*
- Purity\***            *Chosen in because of the definition of Purity and in honor of the "Purity" movement which saw great social reform largely by women through grassroots awareness and legislative action at the end of the last century.*
- America**            *Begin with America and publish the truth beyond our shores to all the world, that we exported lies.*

\*{[Fr. Purit ;; L. puritas, from purus.] Cleanness ; freedom from foulness or dirt ; as the purity of a garment. Holyday Freedom from guilt or the defilement of sin ; innocence ; as purity of heart or life. Chastity ; freedom from contamination by illicit sexual connection. Shak.



## What are the Guiding Principles of the Campaign's Design & Development?

- In 1998 the world will mark Kinsey's Jubilee, fifty years since Kinsey's seminal works, *Sexual Behavior in the Human Male (1948)* and *Sexual Behavior in the Human Female (1953)*.



## Guiding Principles in the Campaign's Design & Development

•Kinsey's human sexuality model is the basis for our "educated" understanding of sex today. In the 2nd half of the 20th Century, Kinsey is the single foundation for sex education for even our youngest children in American public, private and parochial schools



## Guiding Principles in the Campaign's Design & Development

•In 1948, a small (2.5%) cadre of legal change agents began subverting America's founding common law (moral) standard governing family and sex crime laws by citing to Alfred C. Kinsey's human sexuality model as the "scientific" standard and authority.



## Guiding Principles in the Campaign's Design & Development

•America's leadership\* has been thwarted in exposing Dr. Kinsey and his fraud and crime.

However, since Dr. Reisman's discovery in 1981, it is undisputed that *child sexual abuse was a "scientific" protocol Kinsey used for his child sexuality data.* This fact alone speaks to the serious flaws with the Kinseyan view.

\*In 1954, Tennessee Congressman, B. Carroll Reece's 83rd Congressional Committee was stopped from investigating Kinsey's research.

\*Rep. Steve Stockman



## Guiding Principles in the Campaign's Design & Development

Moral considerations aside, the public health data alone prove the overwhelming destruction and dysfunction wrought by Kinsey's distorted view of human sexuality and sexual indoctrination. Now that Kinsey's frauds are exposed they require scrutiny and disclosure at the highest levels of law and policy making and at the grassroots.





## Guiding Principles in the Campaign's Design & Development

The shift in standard and its institutional acceptance has seen concerned socially conservative organizations proliferate in the 2nd half of the 20th Century, largely to rectify the traumas created by Kinsey's fraudulent and criminally derived data.



## The Kinsey's Data. . .

Reshaped sex education, sexuality accreditation, the use of obscene materials within the classroom.

Are the authority for discarding "common law" for objective law," reducing all sex crime penalties.

Have received federal & state monies.

Have facilitated current out of wedlock rates

Have facilitated current sex crime rates.

Have increased homosexual and bisexual conduct.

Have eroticized infants & children.

Failed every vital statistical measurement of success as a health-based body of theory.



Pre-1950, *without abortion & contraception* easily available,  
illegitimacy rates ran  
5% overall.



Post-1950: *With easy access to abortion and contraception*,  
Illegitimacy rates have risen to  
**30% for Whites &  
70% for Blacks**

Kinsey's sexuality has destroyed the black family.



## **A Loss of Virtue Yields a Crisis of Vice and an Erosion of Families**

**560% Increase in violent crime since 50s**

**600% Juvenile crime increase post-1960**

**128% Increase in juvenile murder,  
1983-1992**

**400% Increase in out of wedlock birth**

**50% Increase in divorce**

**200% Increase in the teen suicide rate**

*Wilson Quarterly, Spring 1996*



## **A Loss of Virtue Yields a Crisis of Vice and an Erosion of Families**

**300% Increase in child abuse  
reports and neglect**

**80% Drop in SAT scores**

**27% Of girls by age 18 have intercourse in  
1950s -- but most are married**

**56% Of girls by age 18 had intercourse  
in 1988 most are unmarried**

*Wilson Quarterly, Spring 1996*



## A Loss of Fathers Yields an Erosion of Families

- 60% Rapists are fatherless**
- 72% Adolescent murderers are fatherless**
- 70% Long-term inmates fatherless**
- 21% Income decline in child's home, post divorce**
- 50% Of divorced moms get no child support, with payments decreasing over time**
- 38% Of the "Poor" are children**

**RSDP**  
AMERICA

## Were Kinsey's Data Flawed?

Roughly 67% of Kinsey's males were sex offenders (1,400) redefined as Joe College.

Female subjects largely redefined as "married" to include prostitutes and the like.

Child subjects wholly aberrant boys, rapes of boys redefined as normal child sex data.

1,849 Black & prison women discarded, & each person "cumulated" to overstate aberrant sex acts.

Claimed to have interviewed both 12,000 & 21,000 subjects yielding 9,000 "missing persons" in 1948.

Claimed a "carefully planned population survey." etc. (Male 618).

**RSDP**  
AMERICA

**RSVP Purpose:**

*To clear Kinsey from the path so that the restoration of moral authority can be accomplished through the efforts of the 2.5% of people found in America's 2.5% cutting edge Churches.*

Isaiah 42 :13-22.



**Dr. Ira Reiss**



## What can a few dedicated people do?

"To build [sexual] pluralism we must firmly root out the narrow thinking about sex that exists in all of our basic institutions family, political, economic, religious and educational. We need to change our whole basic social institutional structure....**We don't need a majority of the nation in order to make significant changes in our society. We need only a small percentage of the population who are dedicated to promoting all of our sexual rights.**"

**Kinseyan, Ira Reiss, Author of "An End to Shame."**

Past SSSS (Society for the Scientific Study of Sex) President and  
SIECUS (Sex Information and Education Council of the US)  
Board Member, distinguished Lecturer at the Institute for the Advanced Study of Human Sexuality,  
explained the battle lines first drawn by Kinsey in 1948.



The campaign provides a **strategic offensive\*** opportunity to eliminate the Kinsey model starting in America's schoolrooms and then libraries, legislatures and courtrooms, through a campaign which has a beginning and an end.

RSVP also has a funding mechanism for the grassroots to fuel the fight without reaching into the family or tithe budgets. People simply redirect money already earmarked for their gift giving and give at least two gifts with an average purchase price of \$59 a year from the Campaign Gift Program.

\*(RSVP is Kinsey's Gettysburg)



The campaign provides a **strategic offensive\*** opportunity to eliminate the Kinsey model in America's schoolrooms, libraries, legislatures and courtrooms, through a campaign which has a beginning and an end.



## Method

**CWA's Area Representatives will designate one person to serve as an *RSVP America* Task Force Coordinator at the Steering Committee level. The Task Force Coordinator will report to the Area Representative and work with the CWA Steering Committee to implement the state's *RSVP* mission, objectives and monitor success and solve problems.**



# The Task Force Coordinator

**R.S.V.P. State Campaign Network**  
**CWA/RSVP Task Force Coordinator**



The Task Force Coordinator designates District Coordinators and they recruit School Committee Leaders in schools to work with teachers to gather sex ed materials to find out which authorities are being cited, materials distributed and who is instructing our children about human sexuality.



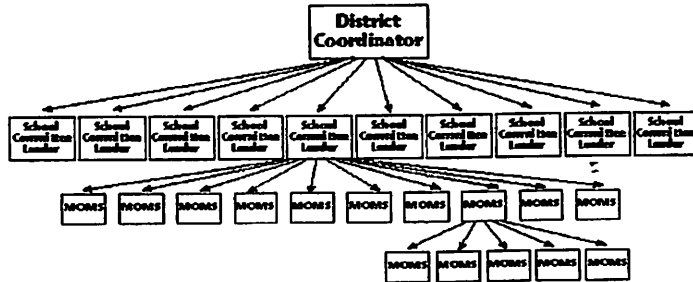
# The School Committee Leader

School Committee Leaders are located through serious outreach. TFC and DC using *RSVP* Transparencies speak to social activists in the 2.5% cutting edge churches. Civic and social organizations can also be addressed. This is a virtue and purity campaign. The School Committee is designed to manage the activities, information, training and advocacy withing their school.





**District Coordinator  
School Committee Leader**



The School Committee Leader is at the heart of the grassroots campaign action team working directly with mothers in her child's or grandchild's school.



School Committees will be responsible for doing what Moms do anyway: She will find out what her children are learning and doing in school in regard to state mandated human sexuality training. They will report back to their School Committees Leader.



The School Committee Moms will be trained by CWA and *RSVP* to identify the Kinsey model in AIDS prevention, state mandated human sexuality training and general educational materials.



## What are the Campaign Objectives?

America's leadership must have the support of grassroots Americans to remove Kinseyan sexology from our basic institutions, that is - as Kinseyan Ira Reiss said - family, political, economic, religious and educational.

Only parents, because they love their children and grandchildren, acting as an informed American citizenry - at the local level - can restore our once healthy national life.



## ***RSVP Objectives:***

*RSVP America* will equip grass roots moms and dads with the information they need to lay the ax to the Kinseyan root in their own homes and communities; to demand the restoration of honest standards to our institutions and public policies regarding marriage and the family based on the America's founding principles of right and wrong.

**Why is *RSVP* training mothers  
and fathers?**

# **“Sexually Explicit Materials”**

*“SIECUS Position Statements on Sexuality 1995” For Children*

Re: children; “When sensitively used...sexually explicit visual, printed, or on-line materials can be valuable educational or personal aids... reduc[ing] ignorance and confusion and contributing to a wholesome concept of sexuality.

## **“SIECUS NATIONAL GUIDELINES”**

**Only SIECUS Approved Teachers  
to Teach Sex Education: K - Ph.D.**

“Sexuality education should only be taught by specially trained teachers....in human sexuality, including the philosophy and methodology of sexuality education.

Ideally teachers should graduate from....programs in schools of higher education that provide the professional with the most time-intensive...training. At a minimum, teachers should participate in extensive in-service courses continuing education classes, or intensive seminars [Sexual Attitude Restructuring].”

SIECUS "NATIONAL GUIDELINES FOR COMPREHENSIVE  
SEXUALITY EDUCATION" 1991

# Sex Education as Molestation

*Early exposure of children as advocated by Kinsey and his progeny to human sexual behaviors masquerading as sex or AIDS Education causes similar harm as occurs after actual criminal molestation:*

“Contrary to the teachings promulgated by sex educators ... adult perversers are primarily a product of premature sexual experiences or seductions in early childhood. This is true whether the seduction is due to actual attacks by a child molester, or whether the seduction is due to overexposures to sexual activities in sex classrooms or in the pornographic media.\*\* [F]orcing of sexual preoccupation on the elementary school child is very likely to result in sexual difficulties in adulthood, and it can lead to disturbed behavior in childhood.\*\*\*

\*Killers of Children. A Psychoanalytic Look at Sex Education.  
Melvin Anshell, MD, ASPP, American Life League, Stafford, VA, p. 41;  
\*\*Ibid, quoting Dr. Rhoda Lorand, p. 25.

## What are **RSVP** Training Materials?

•“The Basket”of instructional materials:

- The Table 34 Video
- The Parent’s Training Manual & Training  
Transparencies
- The Curriculum Evaluator
- The **RSVP** Gift Catalog

## Dr. Reisman's New Book



This is the definitive book to give to Pastors, school board members, legislators and other public authorities to help them to understand the root cause of the Sexual Revolution. It is to be released January 5, 1998, 50 years to the day of Kinsey's first report.

How will the campaign and legislative effort be funded?

*Like "Lifeline,"*  
*the RSVP Gift Program is Gift-Giving to*  
**Fund the Fight at the**  
**State and National Level**

## Mitchell Tolle, American Artist Edifying Art v. Pornography

Hugh Hefner was Kinsey's "pamphleteer."

And as Hefner's images pointed the way to America's demoralization, Mitchell Tolle's art will point the way back to social virtue and purity and fund the campaign through *RSVP's* gift-giving program.

### The *RSVP* Gift Program Catalog

**Restoration is natural & vital to the maintenance of life...**



**Restoring America's Virtue through R.S.V.P. America**

Since Hugh Hefner's images are so destructive to American families, it is fitting that Mitchell Tolle's wonderful artwork provides a beautiful way to fund the campaign and for people to participate in the *RSVP* campaign, especially if they do not have the time to be directly active. On a \$59 framed print, nearly 14% is returned to CWA.

**What is the effect of a successful campaign on CWA?**

*RSVP America* campaign is designed to increase membership, strength the organization and enhance financial stability.

Increased membership, access to a new flow of funds for organizational purposes; and the satisfaction of working toward offensive solutions designed to address the bogus root of long standing problems.

What happens to *RSVP* After the initial objectives of the campaign have been met?

The restoration process will come under the sole direction of the campaign participants, CWA and Church leaders. Each organization and its individual focus will be better positioned, equipped and financed to proceed with Kinsey out of the way.